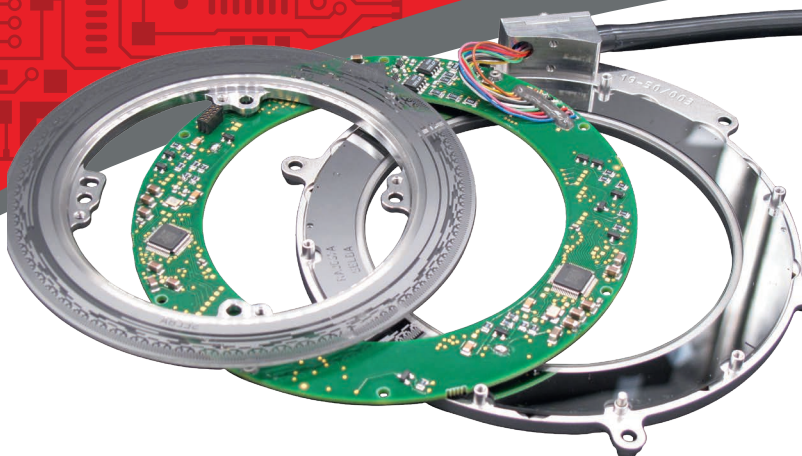


# Single turn absolute optical encoder



**CAP50-01**

**Size 50 - Ø 119 mm**

## MAIN TECHNICAL CHARACTERISTICS

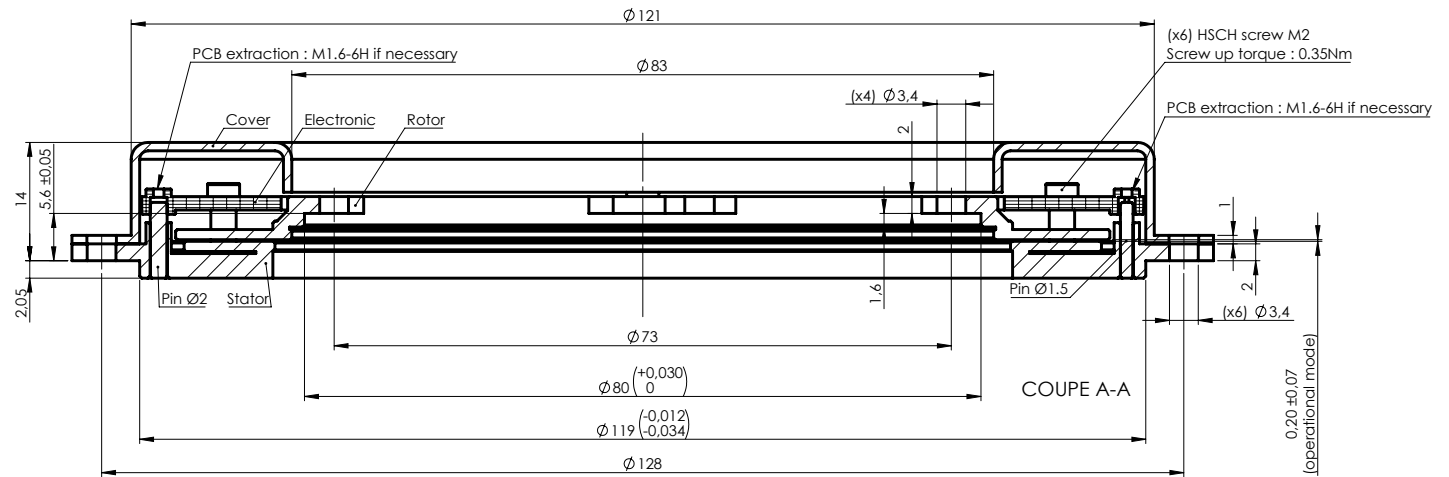
<b>Resolution</b>	<b>up to 23 bits</b>
<b>Accuracy</b>	<b>± 10"</b>
Power supply	+ 5V
Serial output	SSI2 or SSI
Operating speed	300 rpm
Load on shaft (axial and radial)	N/A
Max. temperature range	-45°C to +105°C
IP maxi	N/A

For further information, please contact our sales department :

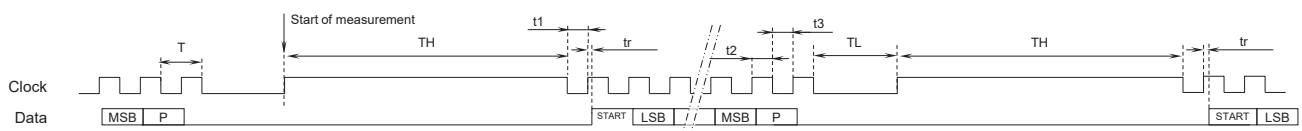
# Single turn absolute optical encoder

## CAP50-01

### Drawing



### Serial output diagram TYPE SSI2



$t1$  : The first low state after  $TH$  time must be  $\geq 250$  ns  
 $t2$  : 200 ns min.  
 $t3$  : 200 ns min.

10 KHz  $\leq$  Clock =  $1/T \leq 2$ MHz max.  
 $TL = 2T$  min.  
 $TH = 7\mu s$  min.  
 $tr = 0.2\mu s$  max.  
 P = Parity bit

Truth table for parity bit

	Parity bit
If $\Sigma$ of the bits at 1 (including start bit) is even then	0
If $\Sigma$ of the bits at 1 (including start bit) is odd then	1

