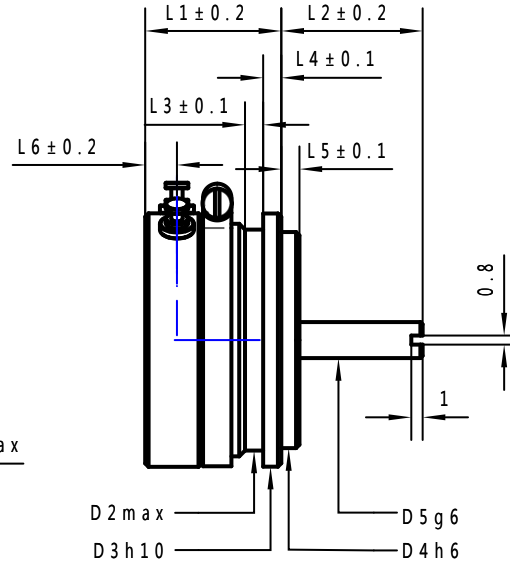
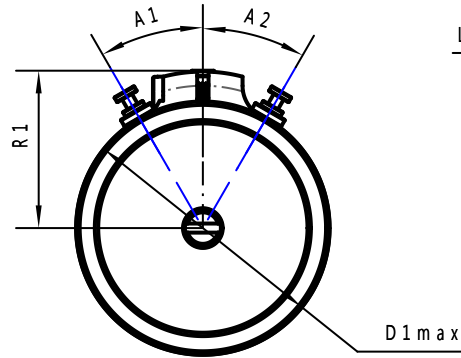
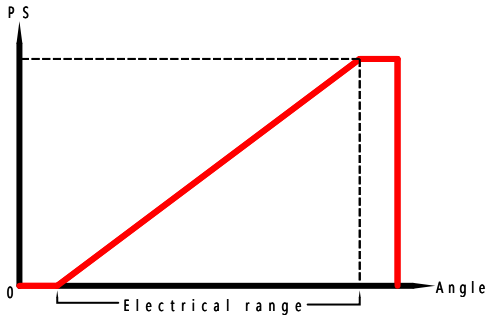
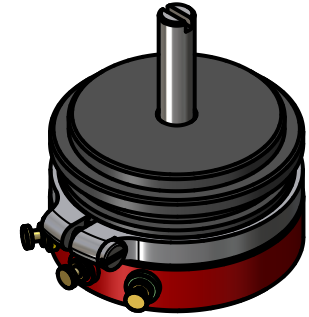


	A1	A2	R1	D1	D2	D3	D4	D5	L1	L2	L3	L4	L5	L6	Weight
P12	60°	60°	9.05	12.70	11.2	12.70	9.525	3.175	12	12.5	1.3	1.2	1.0	4.8	
P19	30°	30°	12.2	19.05	17.5	19.05	12.7	3.175	12	12.5	2.8	1.6	1.6	3.4	
P22	30°	30°	14.0	22.35	20.0	22.35	19.05	3.175	12	12.5	1.6	1.6	1.6	3.4	
P27	25°	25°	16.2	27.00	25.00	27.00	25.4	3.175	12	12.5	2.8	1.6	1.6	3.1	
P33	25°	25°	19.4	33.33	31.00	33.33	30.16	option	12	16.0	3.1	1.6	1.6	2.6	
P36	25°	25°	21.0	36.5	33.3	36.5	33.32	6.35	12.05	16.0	1.9	1.6	1.6	2.6	
P45	20°	20°	25.0	44.45	41.4	44.45	39.67	6.35	12	16.0	2.8	1.6	1.6	2.8	
P50	15°	15°	28.1	50.8	47.6	50.8	47.63	6.35	12	16.0	1.9	1.6	1.6	2.8	
P77	15°	15°	40.8	76.2	73.1	76.2	73.02	6.35	12	16.0	2.7	1.6	1.6	2.6	



Equivalent noise resistance	<500E	
Insulation resistance	>1000MO	500Vac
Dielectric with standing volt.	750Veff	50Hz-1min
Shocks		
Vibration		
Temperature range	-55°C	+125°C

Sizes			P12-05		P19-08		P22-09		P27-11		P33-13		P36-15		P45-18		P50-20		P77-30	
designation	unit	tolerance	min	max	min	max	min	max	min	max	min	max	min	max	min	max	min	max	min	max
resistance range	Kohm	±10%	4.7	50	4.7	60	4.7	60	3.9	80	1	100	1	100	1	100	1	100	3	220
electrical range	degree	±1	40	<345	30	350	30	355	25	356	25	357	20	357	20	358	20	358	20	358
independent linearity	±%	N/A	0.25	2	0.2	1	0.1	1	0.1	1	0.1	0.5	0.1	0.5	0.05	0.5	0.05	0.5	0.05	0.5
inter-linearity	%	N/A	0.5	4	0.4	2	0.25	1	0.3	1	0.2	2	0.2	1	0.15	1	0.15	1	0.15	1

Options			P12-05		P19-08		P22-09		P27-11		P33-13		P36-15		P45-18		P50-20		P77-30	
designation	unit	tolerance	min	max	min	max	min	max	min	max	min	max	min	max	min	max	min	max	min	max
Number of elements	1	N/A	1	3	1	5	1	6	1	7	1	7	1	12	1	12	1	12	1	12
Number of taps	1	±1°	1	3	1	5	1	12	1	27	1	27	1	33	1	42	1	42	1	69
Shaft diameter	mm	g6	1.5	3.175	3	6.35	3	6.35	3	6.35	3	6.35	3	6.35	3	6.35	3	6.35	3	6.35



Standard one turn conductive plastic potentiometer

FTC-01